

# Remedy Oak Golf Club, Dorset

## Clubhouse

The stunning new clubhouse at Remedy Oak Golf Club was set up with three things in mind: to provide high quality facilities for members – on par with the magnificent course; to introduce imaginative, sustainable architecture into a golf course setting and protect the natural environment.

### The Client

Situated in 256 acres of ancient woodland, Remedy Oak is a new championship golf course near Horton, Dorset. The owners, who wanted a clubhouse that would be a real signature of the course, approached Plus Design and Build (PDB) with the request that they construct an environmentally sustainable building that would fulfil all their objectives.

### The Brief

The new building had to include: an open bar / lounge / restaurant; lobby and reception with office; pro shop; changing rooms with showers and toilets, kitchens and rooms for staff use, plant and storage rooms.

Having assessed the site and been given a detailed brief, PDB's architects submitted a design for a low building, set back into the top of a sloping site, with open views over a lake and the 18th green.

The proposal was accepted and PDB liaised closely with the local planning department – the plans passing the complex planning stages with only minor modifications.

### The Specification

The new clubhouse is based around two diametrically opposed pyramid shaped structures, one housing a restaurant and a second a pro-shop. These are connected by a bar and lounge area, kitchens, committee room and changing rooms around three sides of the perimeter, and a lobby and reception in the centre. A single-level cottage-red, concrete tiled roof, with gable features to break the line, provides a homogeneous look.

As the client was looking for natural yet low-maintenance external finishes, PDB specified a brick plinth and cladding using horizontal Siberian larch panels.





Siberian larch was chosen because it is hard, durable and requires little maintenance. Over time it tends to fade to an attractive silver grey colour.

A major intention of the design was to give an airy 'barn-like' feel in the communal areas and allow as much natural ventilation as possible. A high vaulted ceiling, constructed from glulam laminated timber achieves this. The main clubroom is also mechanically ventilated and air conditioned through louvres concealed in small roof dormers.

A full height dormer entrance throws itself forward from the building line creating a distinctive entrance to the building, guiding visitors to the lobby and reception, which serves all facilities. Large glass windows positioned for over-the-lake views ensure an appreciation of the outstanding natural environment the club enjoys. Doors along the back of the building lead to a decked area where guests can relax and take in the views.





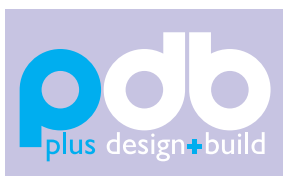
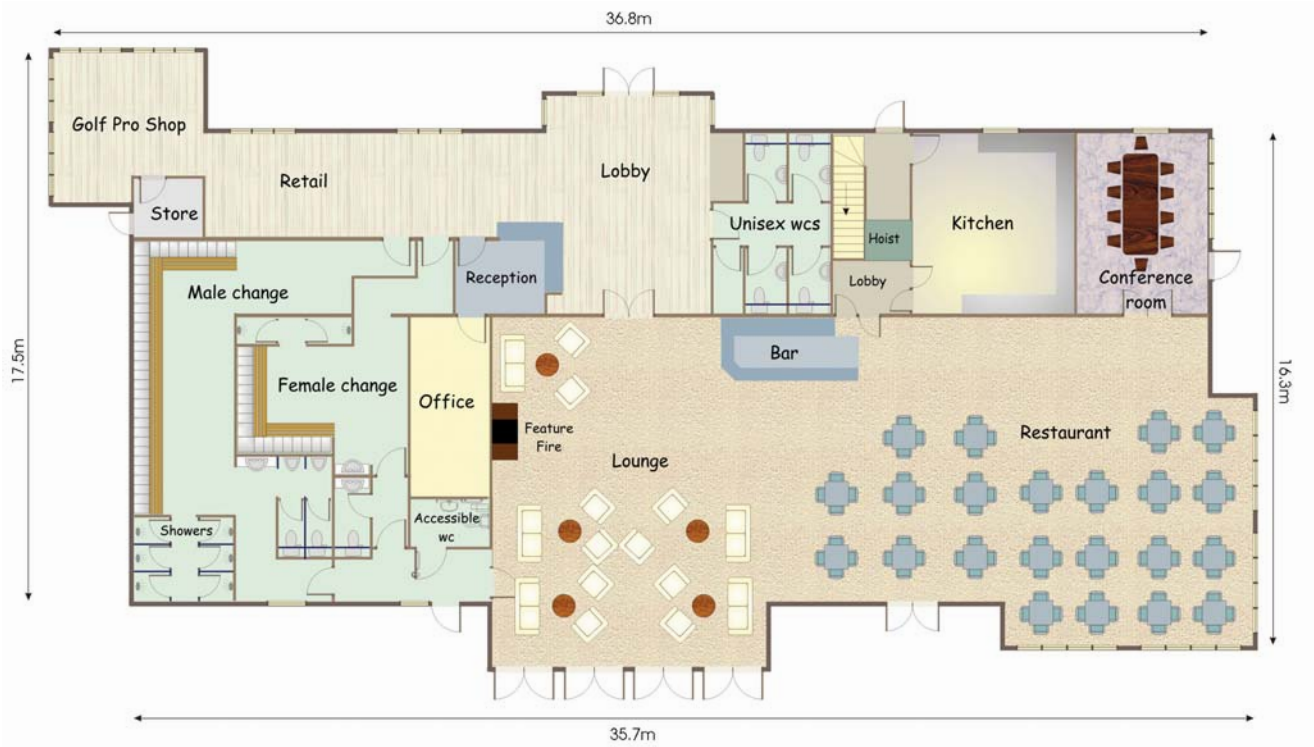


The lighting design for the building was developed following daylight analysis simulations. Many areas including the open lounge, bar and restaurant with its vaulted roof, required both working lighting and feature lighting.

Client: Remedy Oak Golf Club  
Location: Horton, Dorset







Plus Design and Build Limited  
 Riverside Business Park Bakewell Derbyshire DE45 1GS  
 01629 816770 admin@plusdesignbuild.co.uk  
[www.plusdesignbuild.co.uk](http://www.plusdesignbuild.co.uk)